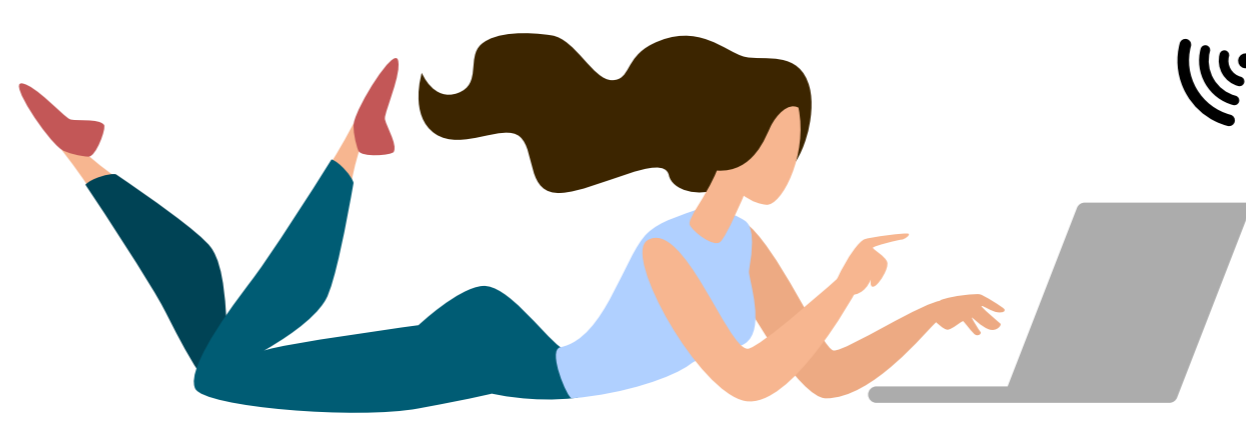


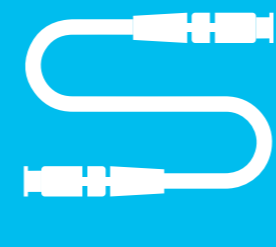
# Set up your Internet



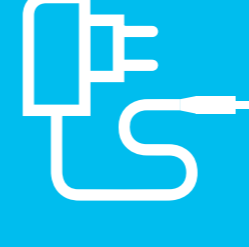
## Your delivery includes:



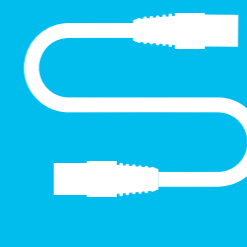
WIFI router



fiber optic cable

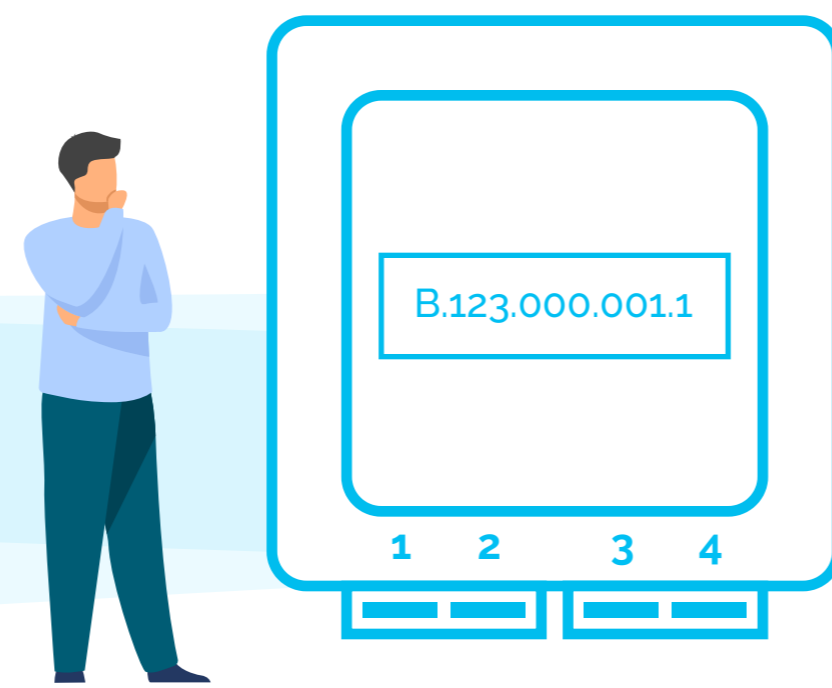


power supply unit



LAN cable

## 1 Find out where the OTO box is located



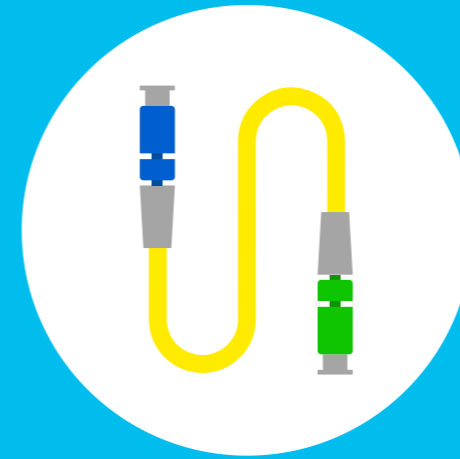
### Tip

The OTO box is usually located in the fuse box, the multimedia box or in the living room.

## 2 Connect the WIFI router with the OTO box

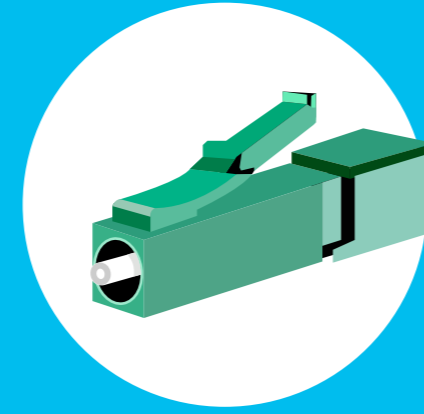
### 2.1.

You will need the supplied fiber optic cable.



### Tip

Do not forget to remove the protective caps before plugging in.

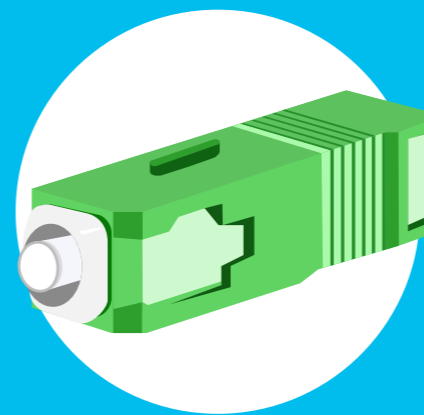


### 2.2.

Plug the thin end of the fiber optic cable into the OTO socket in slot 2. The color does not matter.

### 2.3.

Then plug the other end of the fiber cable into the router. The slot in the router is usually marked «Fiber». As shown in the figure, the cable end usually has a thick plug. However, depending on the router, this can also vary. The same applies to the color.



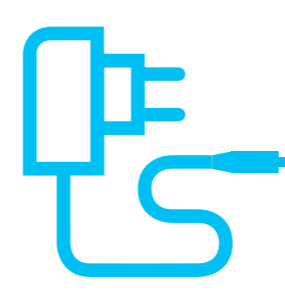
### Tip

The fiber optic cable should not be bent or pressed into a cable duct. It can break easily - a connection to the Internet is then no longer possible.

## 3 Connect the WIFI router to the socket

### 3.1.

The narrow plug from the power supply unit is connected to the WIFI router - „Power“ slot.



### 3.2.

The 2-pole plug will be connected to the nearest socket or power strip.

## 4 Please have some patience



Wait a moment. It takes about 2 to 5 minutes until the WIFI router has configured itself and is ready to start. The Internet and/or Fiber LED will then light up continuously.

### Tip

The WIFI router or the Internet is configured automatically. You do not have to make any settings yourself to make the Internet work.

## 5 Connect to the WIFI

### 5.1.

Select the WIFI/Internet symbol on your device (PC, smartphone, game console etc.) and connect to the WIFI.



### 5.2.

Enter the WPA2 key as password for the WIFI.

### Tip

Both the WIFI name and the WPA2 key can be found on the bottom of the router. Alternatively, you can also connect a device via LAN cable.

### Activation code?

You are asked for an activation code the first time you open the browser? If so, then you should already have received an e-mail with the code.

### Tip

You have not received an e-mail yet? Please check your spam folder.

**Well done!**  
You have successfully set up the Internet



+++  
Do you have problems or further questions about your internet connection? We are there for you Mo-Fr from 8 am to 7 pm.

0848 444 888  
or  
support.teleboy.ch

+++

Please note:

The WIFI router is provided free of charge but on loan. Please keep the original packaging and accessories.