

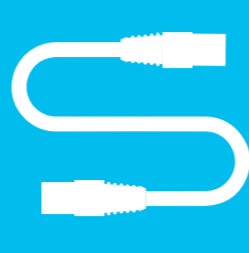
# Set up your Internet



## Your delivery includes:



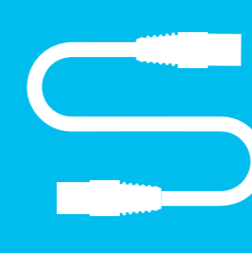
WIFI router



DSL cable



power supply unit

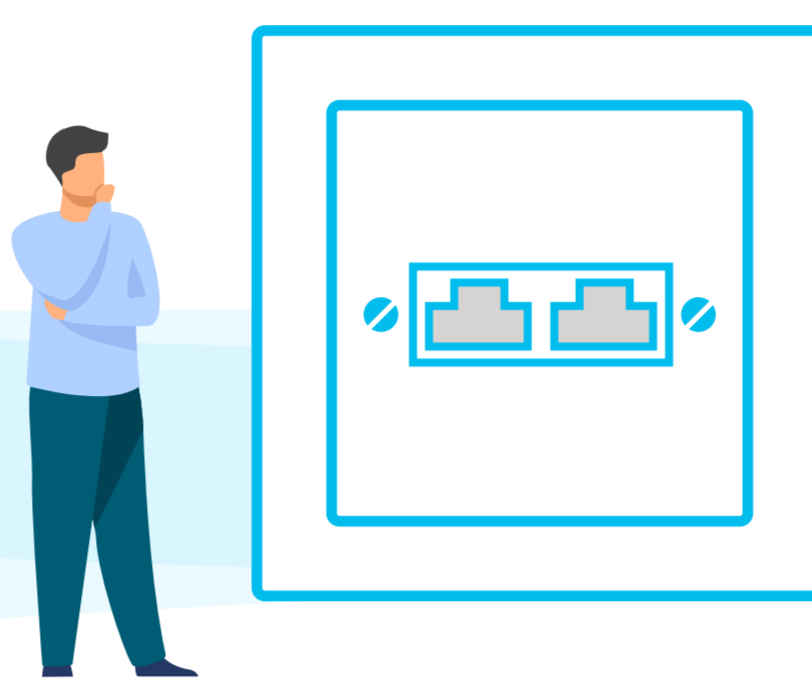


LAN cable

\* adapter for telephone socket (if necessary)

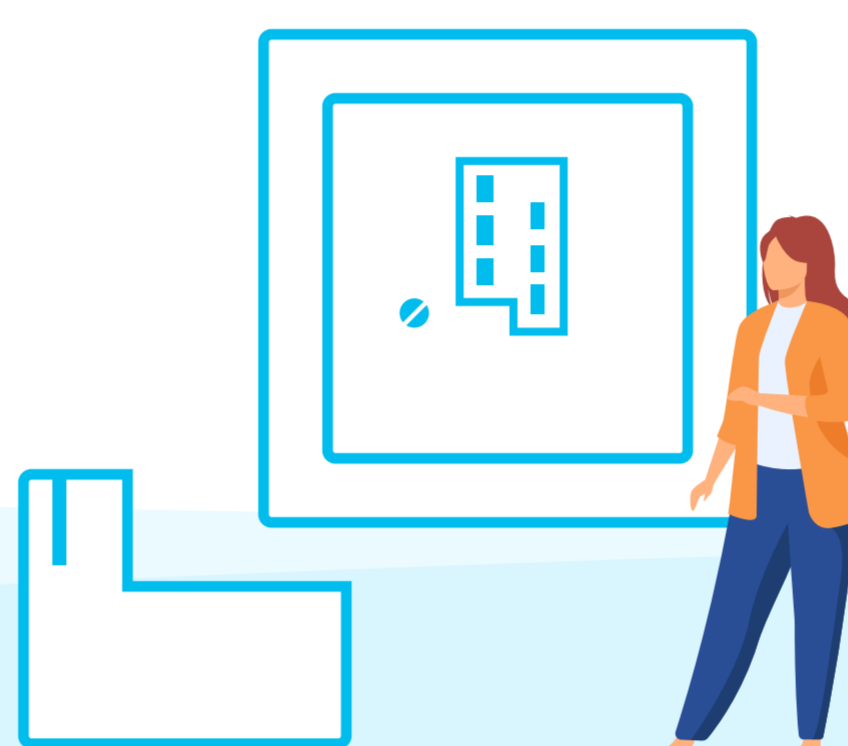
## 1 Find out where the network box is located

Option A: network box



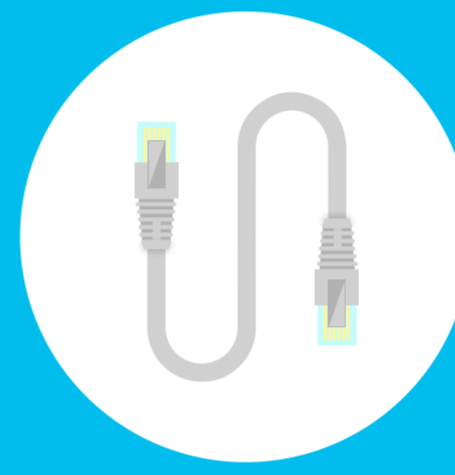
**Tip**  
The network socket is usually located in the living room or where the common cable connection is located.

Option B: telephone socket and adapter



## 2 Connect the WIFI router with the network socket

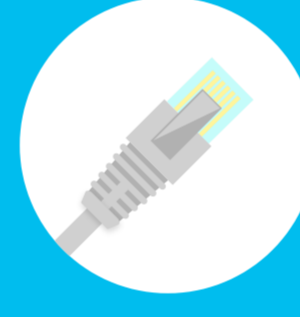
**2.1.**  
You will need the supplied DSL cable.



**Tip**  
Think about where and how the router will be installed before connecting it.

**2.2.**  
One end of the DSL cable is plugged into the router. The slot in the router is labelled „DSL“.

**2.3.**  
The other end of the DSL cable is plugged into the network socket. (If there are 2 sockets, into the left one).

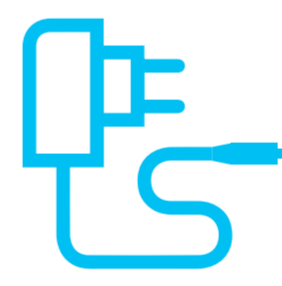


**Option B:**  
The cable is plugged into the adapter, the adapters plugged into the telephone

**Tip**  
Both ends of the DSL cable are the same. So it does not matter which end is plugged in where.

## 3 Connect the WIFI router to the socket

**3.1.**  
The narrow plug from the power supply unit is connected to the WIFI router - „Power“ slot.



**3.2.**  
The 2-pole plug will be connected to the nearest socket or power strip.

## 4 Please have some patience



Wait a moment. It takes about 2 to 5 minutes until the WIFI router has configured itself and is ready to start. The Internet and/or Fiber LED will then light up continuously.

**Tip**  
The WIFI router or the Internet is configured automatically. You do not have to make any settings yourself to make the Internet work.

## 5 Connect to the WIFI

**5.1.**  
Select the WIFI/Internet symbol on your device (PC, smart, game console etc.) and connect to the WIFI.



**5.2.**  
Enter the WPA2 key as password for the WIFI.

**Tip**  
Both the WIFI name and the WPA2 key can be found on the bottom of the router. Alternatively, you can also connect a device via LAN cable.

**Well done!**  
You have successfully set up the Internet



+++  
Do you have problems or further questions about your internet connection? We are there for you Mo-Fr from 8 am to 7 pm.

0848 444 888  
or  
support.teleboy.ch

+++  
Please note:  
The WIFI router is provided free of charge but on loan. Please keep the original packaging and accessories.